

ESG
AAA+

LANDUSE
ZERO CARBON
ZERO ENERGY
ZERO WATER
ZERO WASTE

VALUE CHAIN
ONSITE SAFETY
SUPPLY CHAIN
DIVERSITY

FINANCED EMISSIONS
CLIMATE RISK
AFFORDABLE HOUSING
TARGETS

KPI

CZERO

WT0245842

CZERO
ESG
AAA+

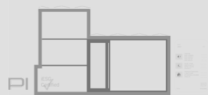
33.1%
ROI

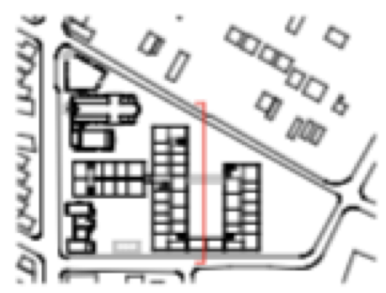
ESG BANK

TITLE

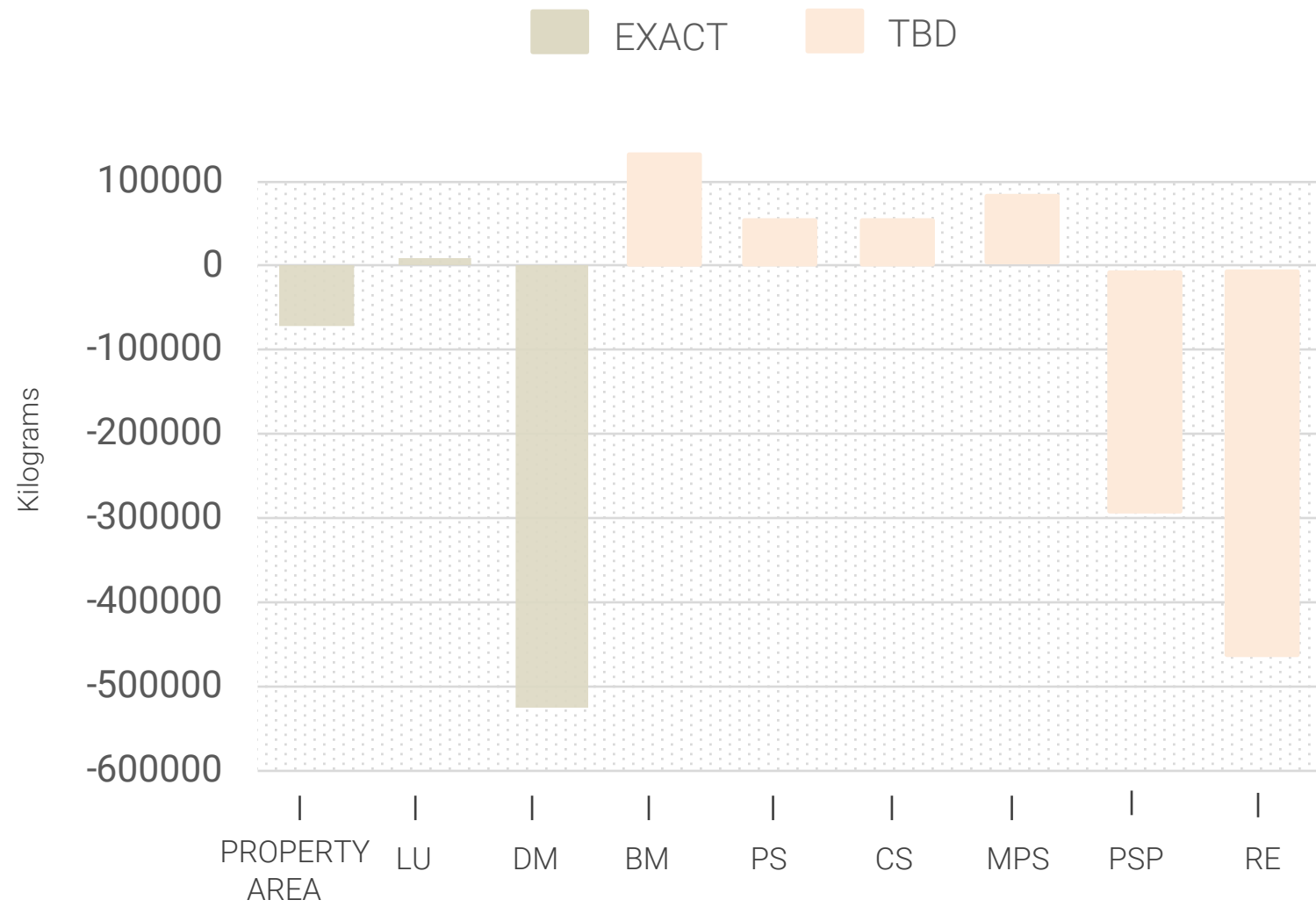
WT0245842

CZERO





LU1: BUILT ENVELOPE CEI BREAKDOWN



76 DEMO – 100k sqft.
Material Upcycling

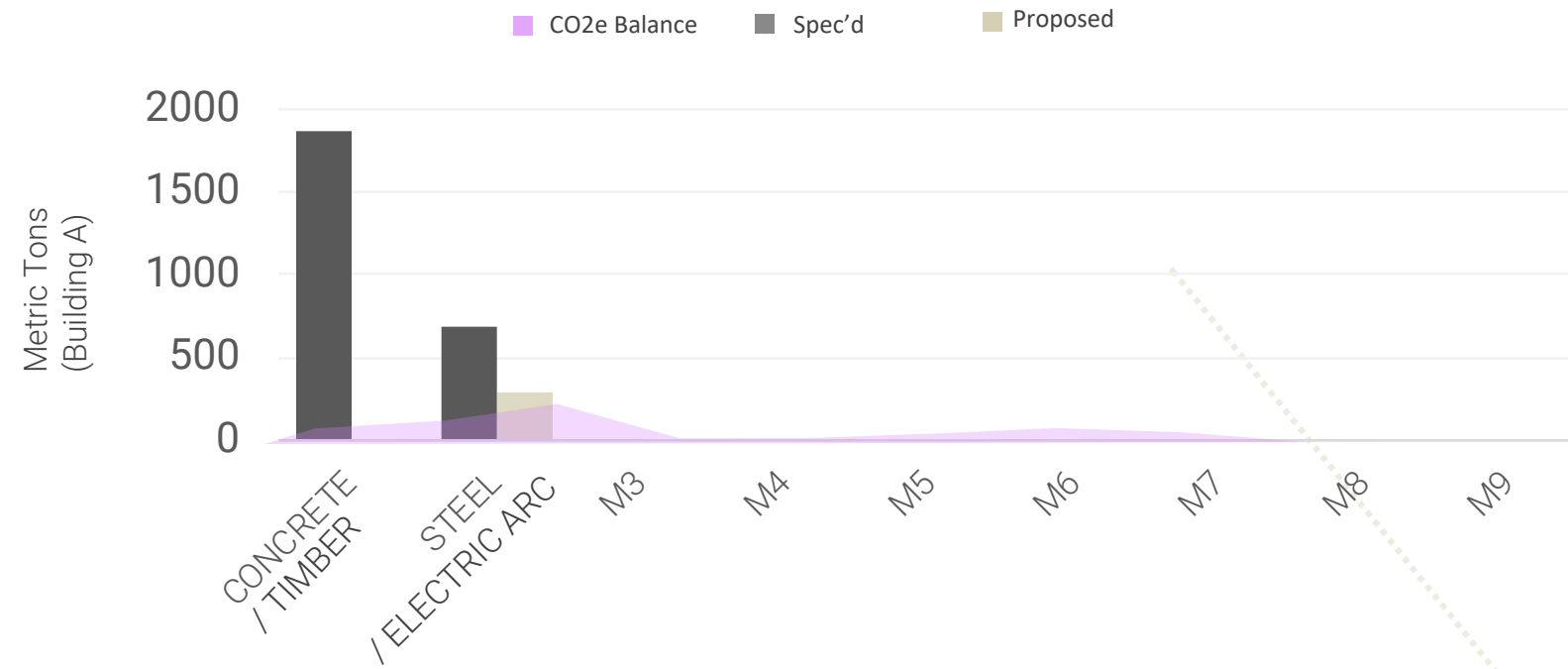
Material	Weight	EF	Credit
Asphalt	1,106	0.08	88
Concrete	1,503	0.01	15
Concrete Beams	990	0.01	10
Steel	276	3.12	861
Metal	349	4.38	1,528

Scan for full impact list

-585
mt



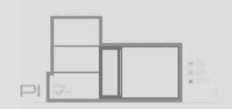
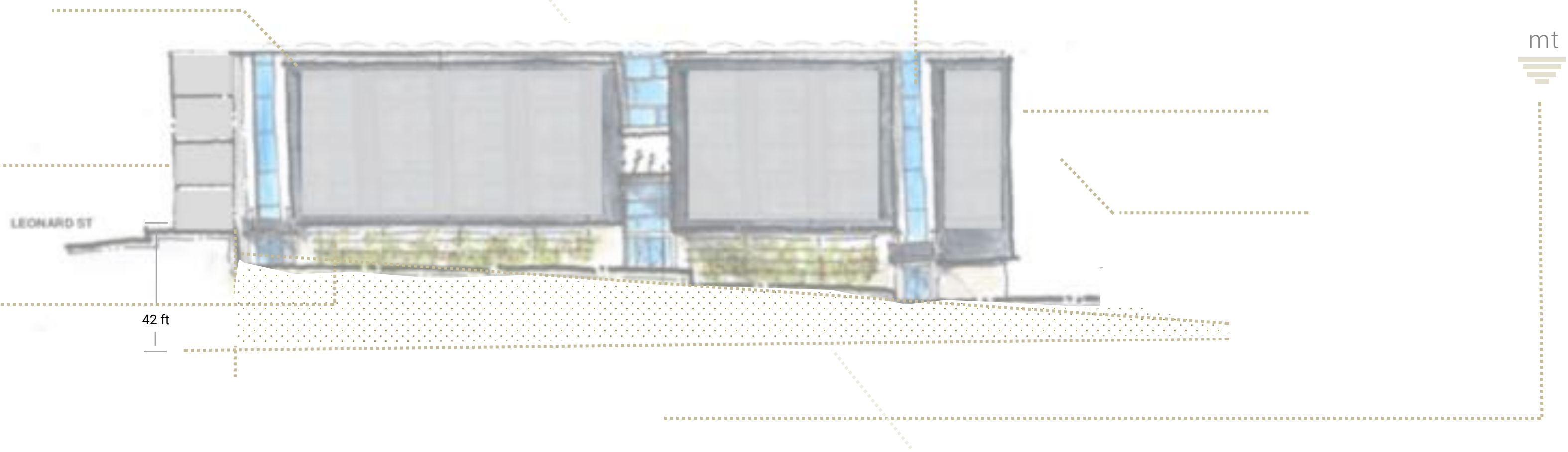
CO2: BUILDING MATERIALS



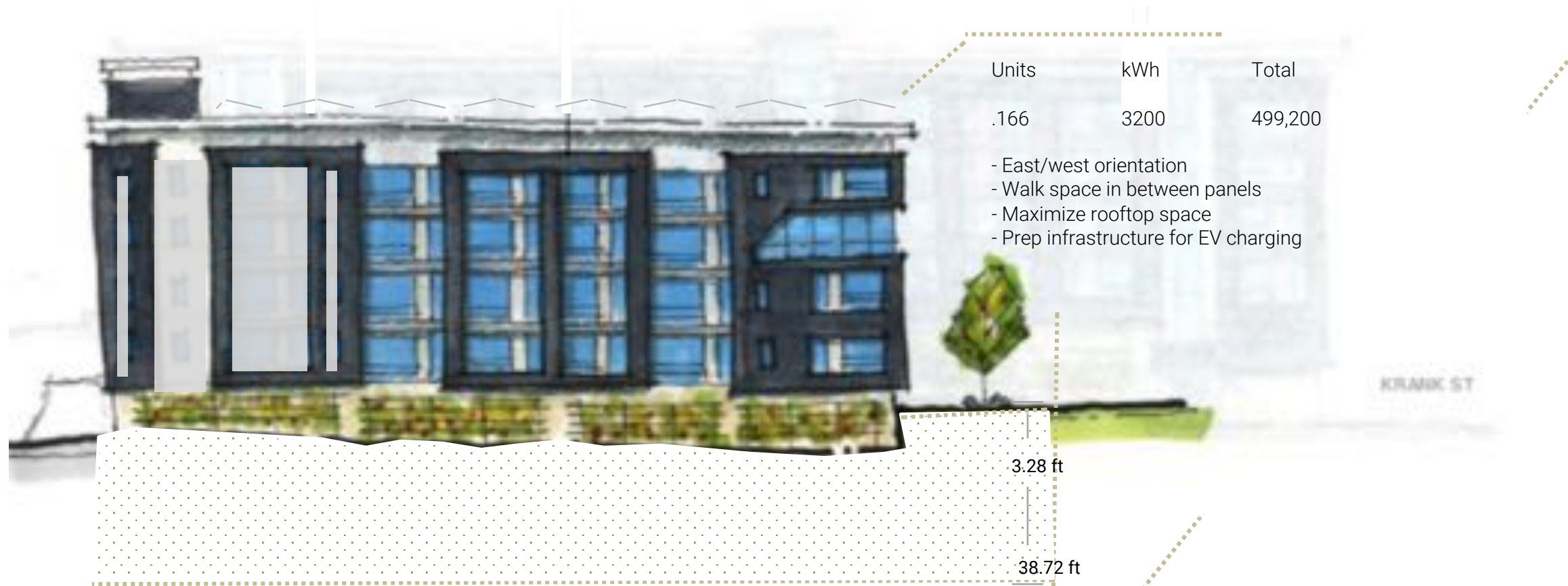
76 LIST Infra, Ext.& Int.

Spec'd	Change	Credit
Cement	Timber	1,864
Concrete Slab	Change	Credit
Steel Rebar	Steel Arc	390
Concrete Beams	Change	Credit

Scan for full impact list

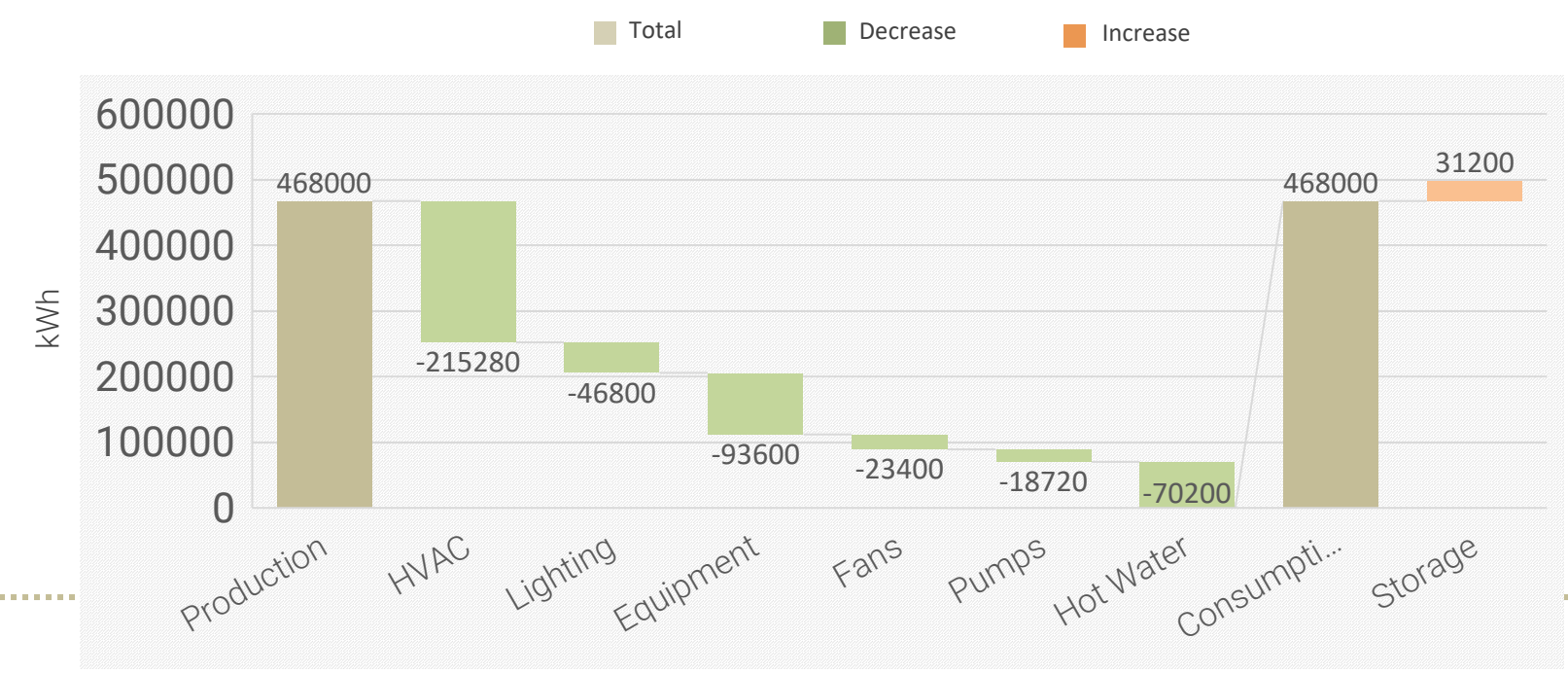


EN3: ONSITE RENEWABLES

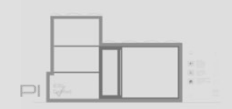


-9,360
mt

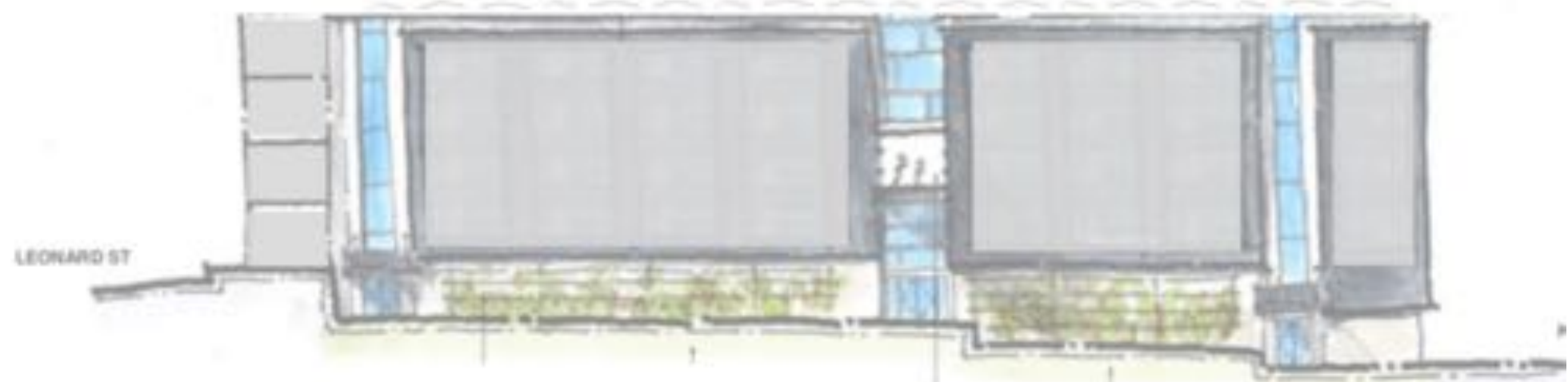
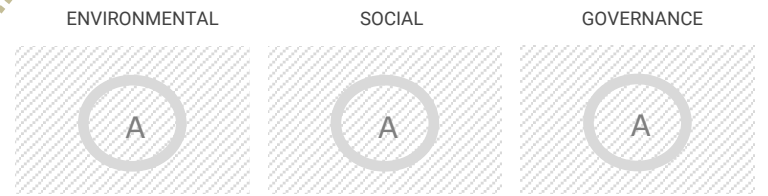
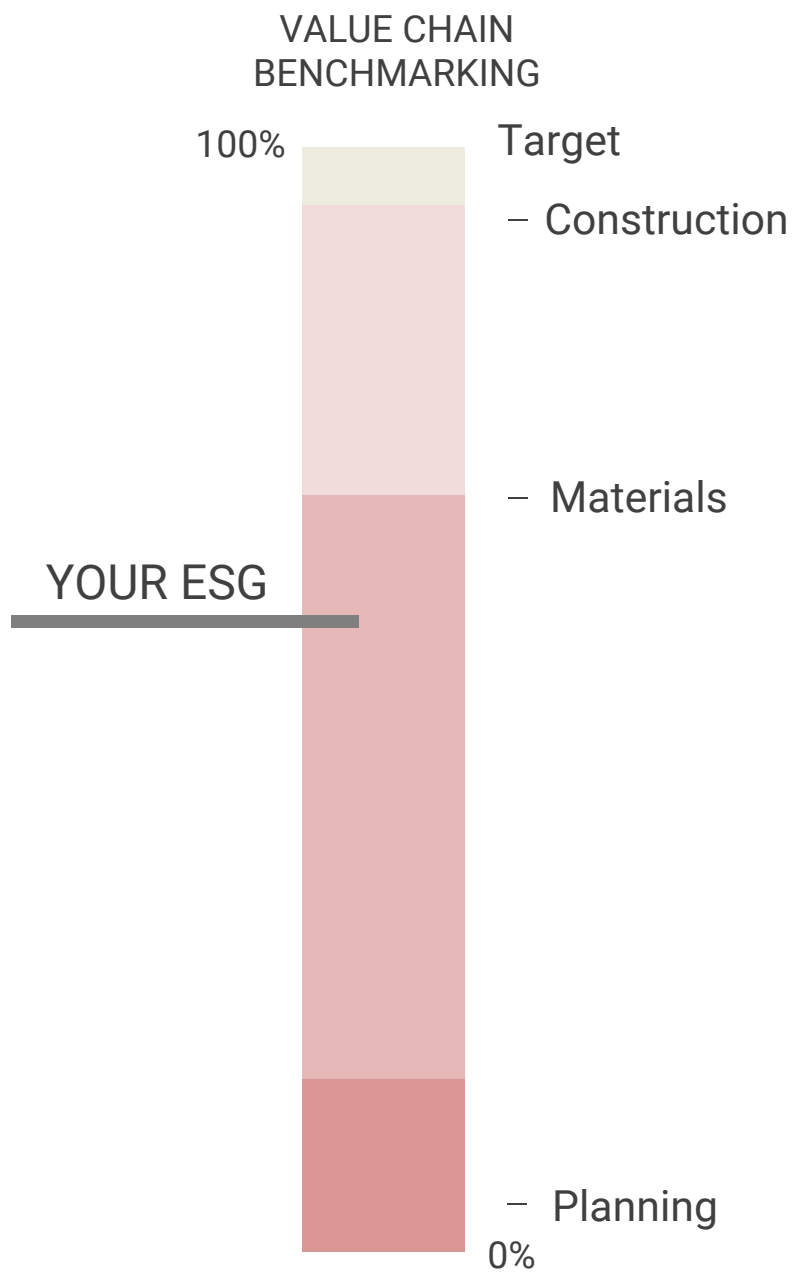
WHOLE BUILDING ELECTRICITY USE BREAKDOWN



468
kWp



SG7: SUPPLY CHAIN



CO	CRAFT	TELE	EMAIL
TSG	General Contractor	480 703 7809	info@tsg.com
SWBR	Architect	585 232 8300	info@swbr.com
ME Landscapes	Landscape Arch	212 213 3122	info@zoeyelle.us
1.5°	HVAC Engineers	838 231 0001	info@1.5.com
ZBUILT	Construction Mgmt.	585 521 2100	info@built.pro

CZERO ESG AAA+

THE SEVENTY SIX
76 SECOND AVE.
ALBANY, NY 12208

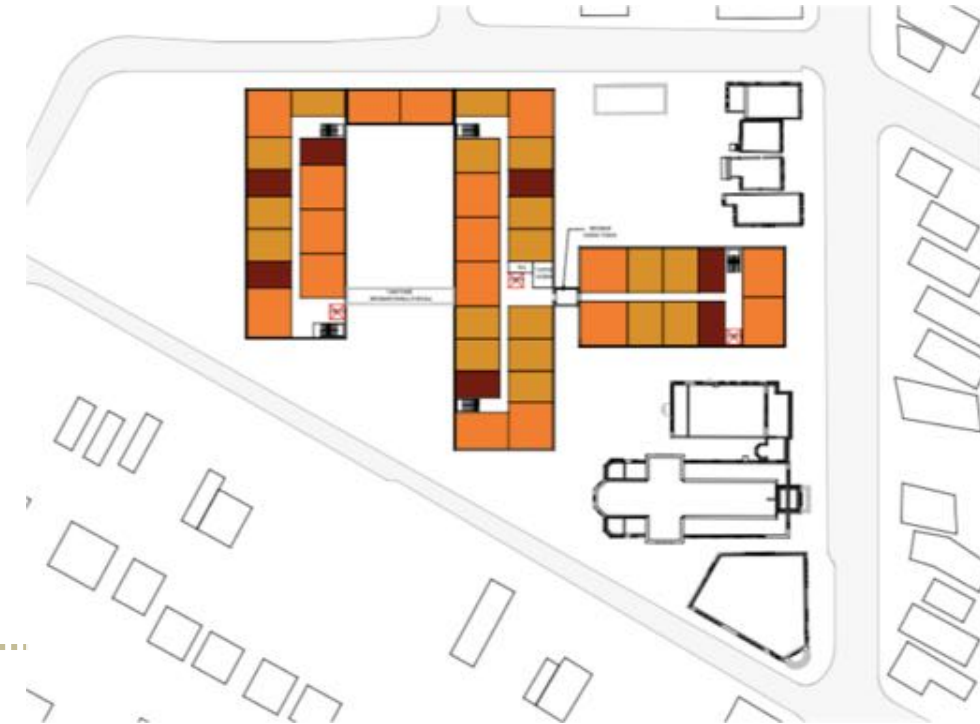
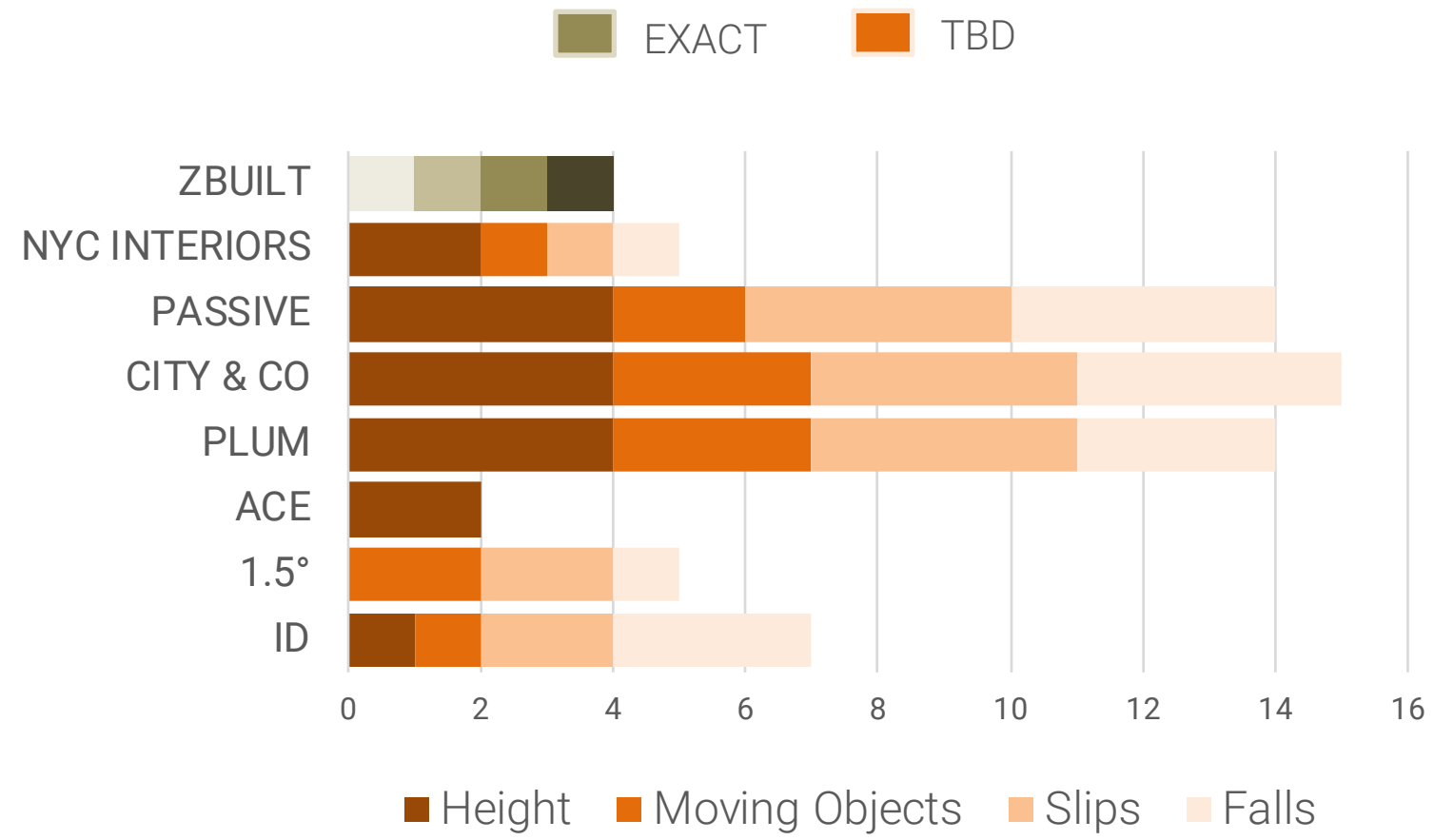
CREDIT EDUCATION

COUNTERPOINTSRE
A Hanover Ammaning Partner

MassMutual

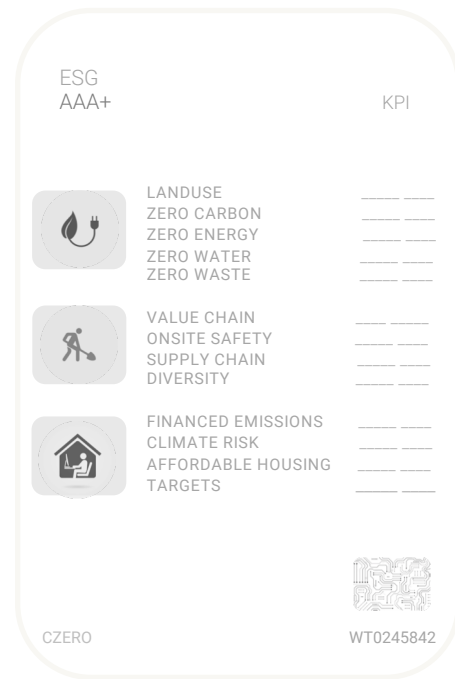
Id

SG7: ONSITE HEALTH & SAFETY

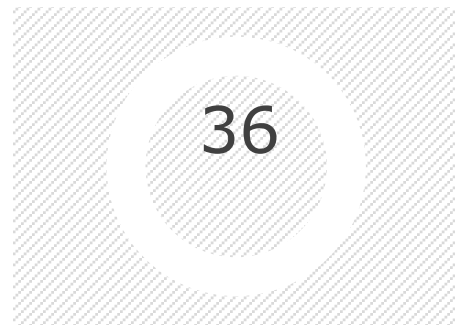


SG7: SOCIAL & GOVERNANCE

CZERO
ESG
AAA+ **33.1%**
ROI



CRR



FEE



FEE: Financed Emissions

Your lenders on balance sheet loans and investments (scope three) are zero. This results in direct portfolio decarbonization and absolute carbon reductions from indirect Scope 1,2, & 3 emissions

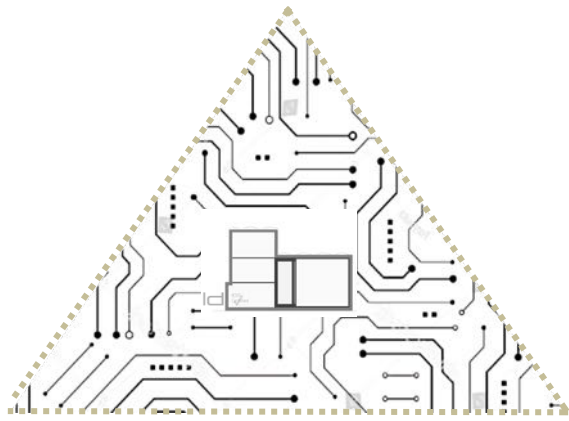
CRR: Climate Risk Rating

Your property is located in a county with less physical risk from natural hazards than other at non-risk counties



36
crr





www.czero.pro/76